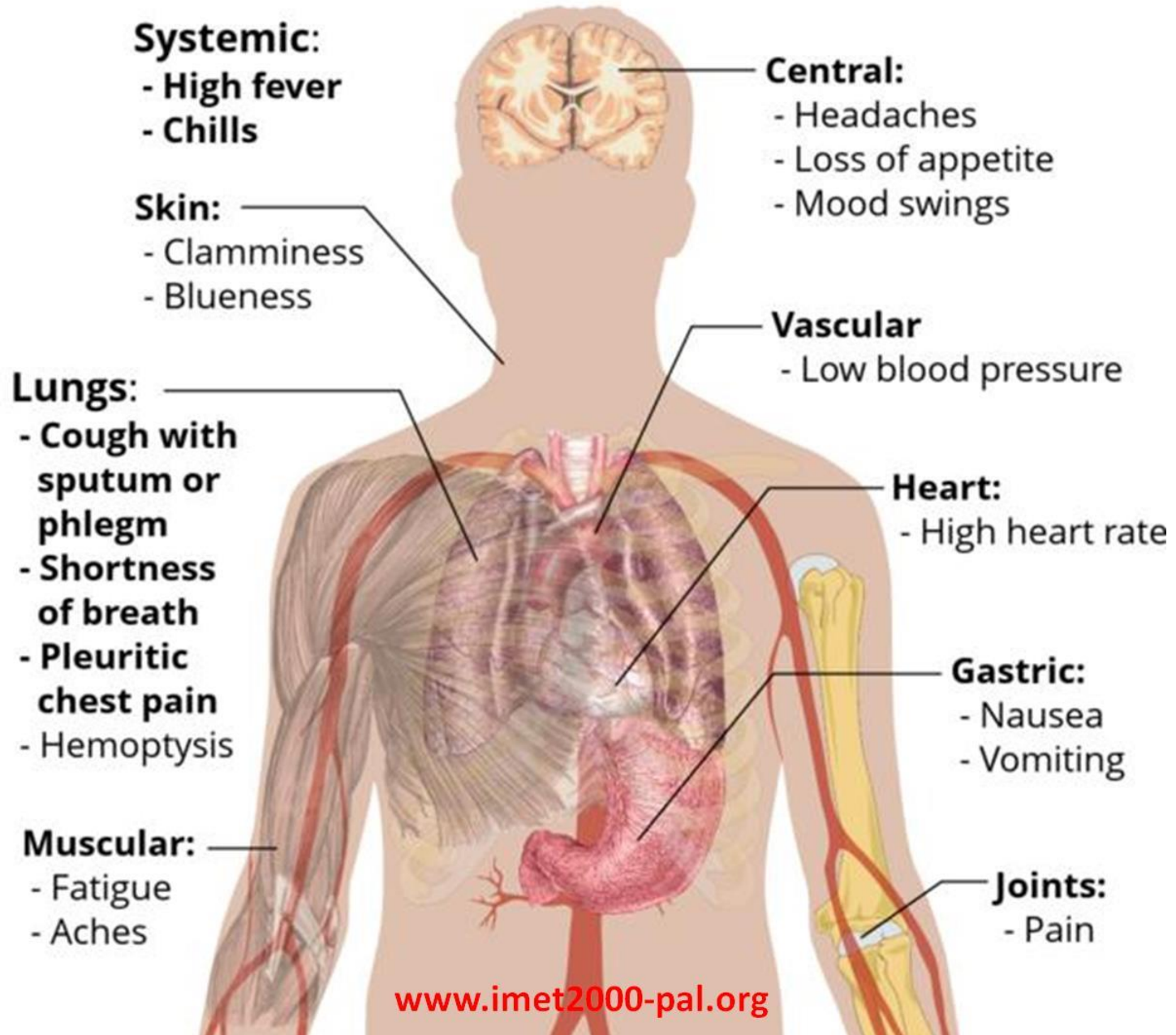


# **Classification of Pneumonia and Ineffective Agents**

**Fadi J. Zaben RN MSN  
Nursing Education Officer  
IMET2000-Pal**

# Main symptoms of infectious Pneumonia



- **Community Acquired Pneumonia:**
  - Develop as outpatient or within 47 hours of hospital admission.
  - **Organisms:**
    - Strep. Pneumonia (Common).
    - Hemphilus influenza.
    - Mycoplasma pneumonia.
    - Staph. Aureus.
    - Clamydophila pneumonia.
    - Influenza a (Usually with bacterial infection).

- **Aspiration Pneumonia:**

- Inhalation of gastric contents resulting in infection.

- **Organisms:**

- Strep. Pneumonia.

- Anaerobes.

- Gram (-) bacilli; e.g E. Coli and klebsella pneumonia.

- **Immunocompromised Pneumonia:**

- Increased risk of pneumonia due to underlying disease e.g. HIV/AIDs and leukemia.

- **Organisms:**

- Strep. Pneumonia.

- Hemphilus influenza.

- Staph. Aureus.

- Gram (-) bacilli.

- Virus: CMV and HSV.

- Fungi: pneumocystis, jiroveci, Cryptococcus app. And histoplasmo spp.

- **Atypical Pneumonia:**

- Pneumonia associated with septic organisms.

- Organism:

- Mycoplasma pneumonia.
    - Legionella pneumonia.
    - Chlamydomphila pneumonia.
    - Chlamydomphila psittaci.
    - Coxiella burnetii (Q-Fever).

- **Childhood Pneumonia:**

- Pneumonia during childhood.

- Organisms:

- Neonates:

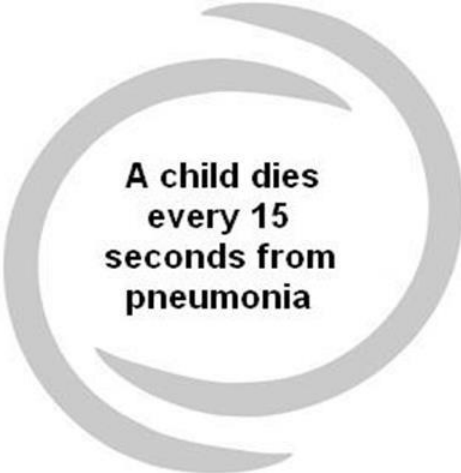
- Strep. Agalacita, E.Coli, Chlamydia trachomatis.

- Infants:

- Strep. Pneumonia, staph. Aureus. Hemophilus influenza RSV, Adenoviruses.

- Children:

- Strep. Pneumonia, staph. Aureus. Hemophilus influenza, pyrogenes.



**A child dies  
every 15  
seconds from  
pneumonia**